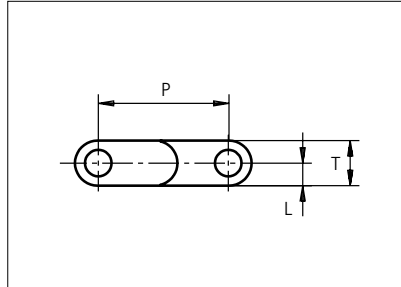
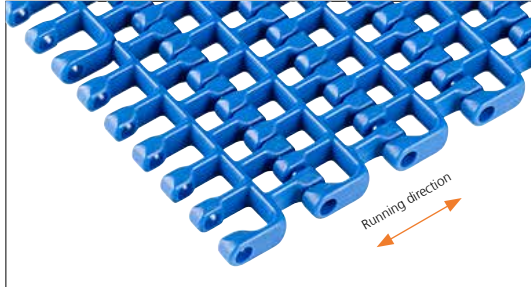




# Plastic Modular Belt

Series **uni SNB** Type **M2 50%**



Straight running belt  
 Nominal pitch: 25.4 mm (1.00 in)  
 Surface type: Flat  
 Surface opening: 50%  
 Backflex radius: 30.0 mm (1.20 in)  
 Pin diameter: 5 mm (0.20 in)

Belt material & color	PA6.6 <b>B</b>	PP <b>B</b>	PP <b>W</b> <b>G</b>	mm	in		mm	in	
				P (Nominal)	25.4	1.00	L	4.4	0.17
Pin material & color	PP <b>B</b>						PP <b>W</b>		
				T	8.8	0.35	-	-	-

Non standard material and color: See uni Material and Color Overview.

Alternative pin and lock materials: Lockpin: PBT **LG** PA6.6 **D** **N** PP **B** **W** PE **N**

Belt width		Permissible tensile force (Belt/pin material)				Belt weight (Belt/pin material)				*Min. No. drive sprocket per shaft	Number of wear strips (Min. No.)	
		PP/PP		PA6.6/PP		PP/PP		PA6.6/PP			**Carry (pcs)	**Return (pcs)
mm	in	N	lbf	N	lbf	kg/m	lb/ft	kg/m	lb/ft			
153	6.0	1836	413	3060	688	0.5	0.31	0.6	0.38	2	2	2
229	9.0	2749	618	4582	1030	0.7	0.47	0.8	0.57	2	2	2
305	12.0	3662	823	6104	1372	0.9	0.62	1.1	0.75	3	3	2
381	15.0	4576	1029	7626	1714	1.2	0.78	1.4	0.94	3	3	2
457	18.0	5489	1234	9148	2056	1.4	0.93	1.7	1.13	4	4	2
534	21.0	6402	1439	10670	2399	1.6	1.09	2.0	1.32	4	4	2
610	24.0	7315	1644	12192	2741	1.8	1.24	2.2	1.50	5	5	3
686	27.0	8228	1850	13714	3083	2.1	1.40	2.5	1.69	5	5	3
762	30.0	9142	2055	15236	3425	2.3	1.55	2.8	1.88	6	6	3
838	33.0	10055	2260	16758	3767	2.5	1.71	3.1	2.07	6	6	3
914	36.0	10968	2466	18280	4109	2.8	1.86	3.4	2.25	7	7	4
990	39.0	11881	2671	19802	4451	3.0	2.02	3.6	2.44	7	7	4
1066	42.0	12794	2876	21324	4794	3.2	2.17	3.9	2.63	8	8	4

Additional standard belt widths are available in steps of 76.1 mm (3.00 in). Additional non-standard belt widths are available in steps of 12.7 mm (0.50 in).

1979	77.9	23748	5339	39580	8898	6.0	4.03	7.3	4.88	14	14	7
------	------	-------	------	-------	------	-----	------	-----	------	----	----	---

Additional standard belt widths are available in steps of 76.1 mm (3.00 in). Additional non-standard belt widths are available in steps of 12.7 mm (0.50 in).

2969	116.9	35628	8009	59380	13349	9.0	6.05	10.9	7.32	20	20	10
------	-------	-------	------	-------	-------	-----	------	------	------	----	----	----

General belt tolerance is +0/-0.4% at 23°C/73°F and 50% RH. For exact belt width contact Customer Service. Non standard belt width on request.

Belt widths in PA66 is 0.2 % wider than the belt widths in the table above.

\*Max. Load per Drive Sprocket. Belt material: PP 1100 N (247 lbf); PA66 1400 N (315 lbf).

\*\*Max. Spacing between wear strips, Carry: 152 mm (6 in); Return: 304 mm (12 in).

= Single Link



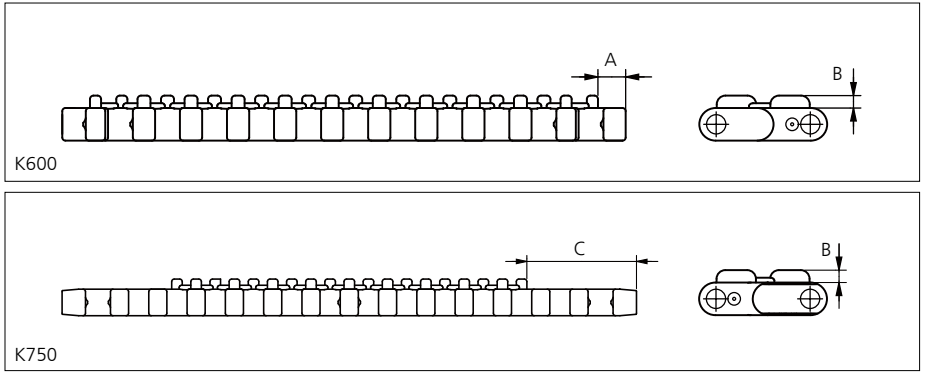
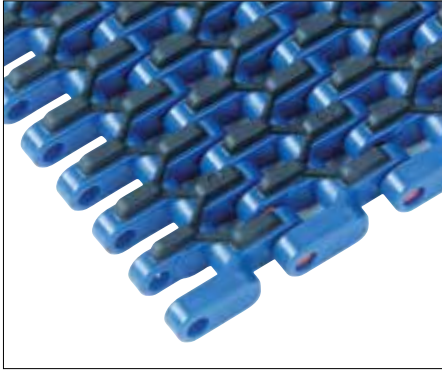
STANDARD

STRAIGHT RUNNING

PITCH 25.4 MM/1.00 IN

## Accessories

### Rubber Top

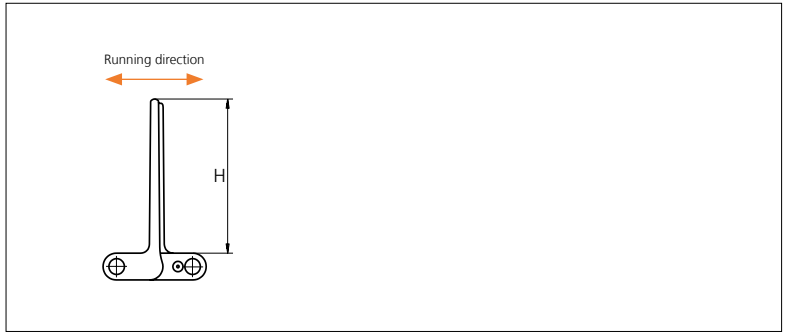
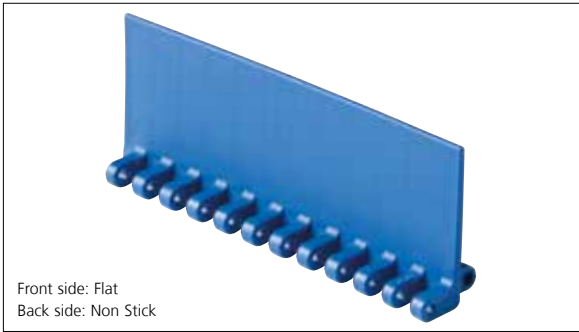


Type	Belt material & color	Rubber material & color	A		B		C		Link size	Width	
			mm	in	mm	in	mm	in		mm	in
M2 20% Flat	PP <b>B</b>	03 <b>K</b>	7.5	0.30	3.4	0.13	36.0	1.41	K300	77.0	3.00
									K600	152.4	6.00
	PP <b>W</b>	03 <b>N</b>							K750	190.5	7.50

Non Standard material and color: See uni Material and Color Overview.

## Accessories

### Flight

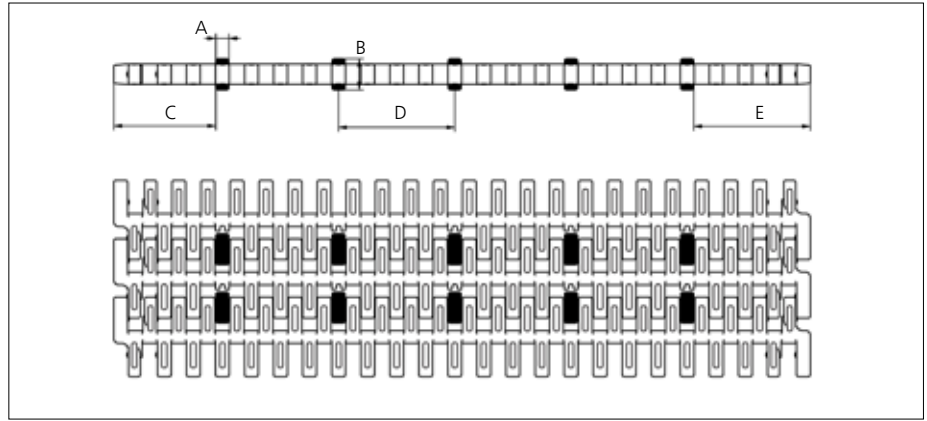
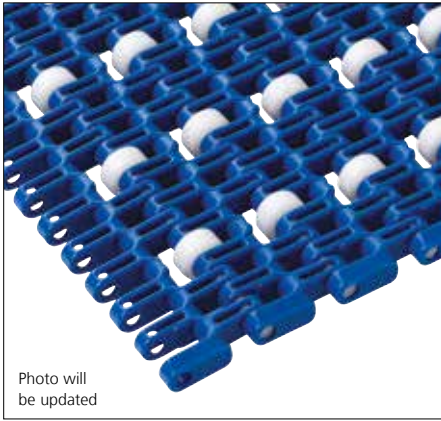


Type	Flight Material & color	H		Link size	Width	
		mm	in		mm	in
M2 20% Flat Non Stick	PP-I <b>W</b> <b>B</b> PE <b>N</b> <b>B</b>	5.0	0.20	K600	151.1	5.99
		25.4	1.00			
		50.8	2.00			
		76.2	3.00			
		101.6	4.00			

Flights on 25.4 mm (1 in) are cut down from 50.8 mm (2 in).

## Accessories

### Rollers NON STANDARD

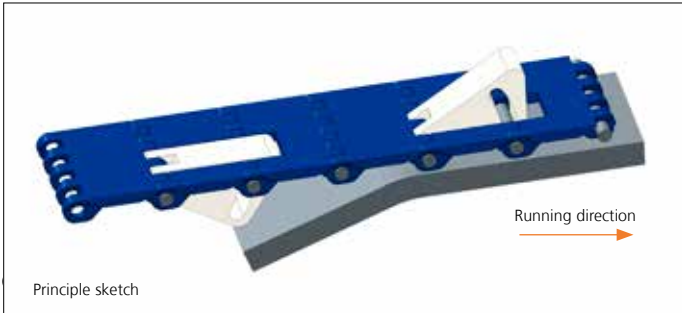


Type	Roller material & color	A		B		C		D		E	
		mm	in	mm	in	mm	in	mm	in	mm	in
Plastic	POM-D <b>W</b>	5.7	0.22	13.5	0.53	44.6	1.75	50.8	2.00	51.0	2.01

Non Standard material and color: See uni Material and Color Overview.

## Accessories

### Non Standard uni AmFlight

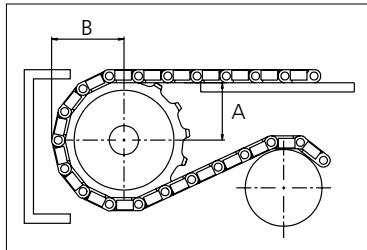
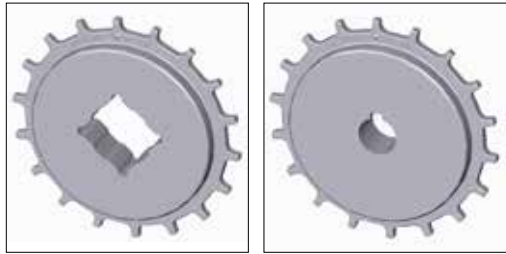


## Sprocket

No. of teeth	Bore size													Overall diameter		Pitch-diameter		Hub-diameter		A-dimension		B-dimension		Single row/Two way	Double row/Two way	Molded PA6 LG	Machined PA6 N
	Pilot Bore	in	0.75	0.78	0.98	1.00	1.18	1.25	1.50	1.57	2.36	2.50	3.54														
	mm	19.1	20.0	25.0	25.4	30.0	31.8	38.1	40.0	60.0	63.5	90.0	mm	in	mm	in	mm	in	mm	in							
Z10	x				●	●	●	■	●				86.0	3.39	82.2	3.24	65.0	2.56	34.7	1.37	45.5	1.79	x		x		
Z12	x				●	●	●	■	●				103.2	4.06	98.1	3.86	65.0	2.56	43.0	1.69	53.5	2.11	x		x		
Z18	x					●	●	●	■	●			151.9	5.98	146.3	5.76	65.0	2.56	67.6	2.66	77.6	3.06	x		x		
Z18	x									●	●		151.9	5.98	146.3	5.76	120.0	4.72	67.6	2.66	77.6	3.06	x		x		
Z19	x					●	●	●	■	●			160.0	6.30	154.3	6.07	65.0	2.56	71.7	2.82	81.6	3.21	x		x		
Z19	x									●	●		160.0	6.30	154.3	6.07	120.0	4.72	71.7	2.82	81.6	3.21	x		x		
Z20	x					●	●	●	■	●			168.2	6.62	162.4	6.39	65.0	2.56	75.8	2.98	85.6	3.37	x		x		
Z20	x									●	●		168.2	6.62	162.4	6.39	120.0	4.72	75.8	2.98	85.6	3.37	x		x		

■ Molded sprocket

● Molded sprocket



Other sprocket sizes are available upon request.  
 Two-part sprocket are available upon request.  
 Round bores are always delivered with keyway.  
 Other bore sizes are available upon request.  
 uni Retainer Rings: See uni Retainer Ring data sheet.  
 Width of tooth = 6.0 mm (0.24 in)  
 Width of sprocket = 25.0 mm (0.98 in)

Max load per sprocket shown does not take bore size into account.  
 Please also ensure that sufficient size shaft is chosen for corresponding load.

For correct sprocket position: See uni Assembly Instructions for uni SNB.  
 For more detailed sprocket information. contact Customer Service.

Non standard material and color: See uni Material and Color Overview.

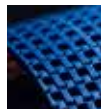
uni SNB M2 50%/150204



Conveyor Belts



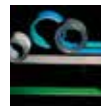
Seamless Belts



Modular Belts



Timing Belts



Transmission Belts



Fabrication & service

Expert advice, quality solutions and local service for all your belting needs  
[www.ammeraalbeltech.com](http://www.ammeraalbeltech.com)

**Ammeraal Beltech Modular A/S**  
 Hjulmagervej 21  
 DK-7100 Vejle

T +45 7572 3100  
 F +45 7572 3348  
 admin@unichains.com  
 www.unichains.com

This information is subject to alteration due to continuous development. Ammeraal Beltech will not be held liable for the incorrect use of the above stated information. This information replaces previous information. All activities performed and services rendered by Ammeraal Beltech are subject to general terms and conditions of sale and delivery, as applied by its operating companies.