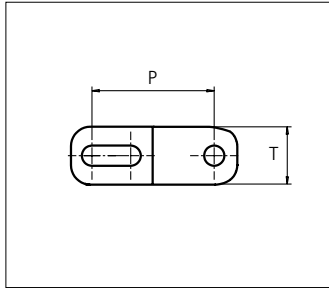
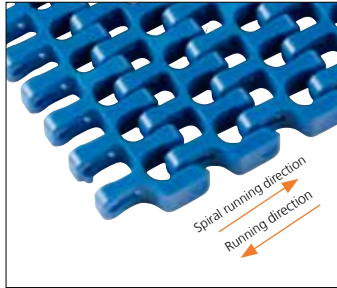




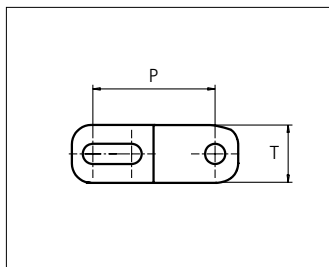
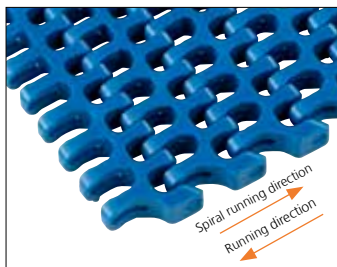
Plastic Modular Belt

Series uni Flex ASB

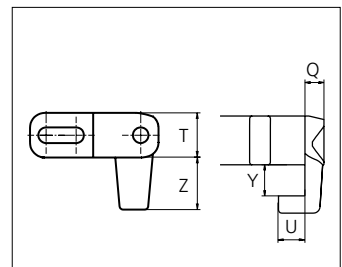
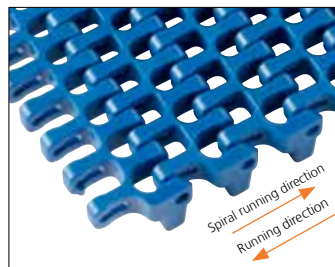


Sideflexing belt
 Nominal pitch: 25.4 mm (1.00 in)
 Surface type: Flat
 Surface opening: 43%
 Backflex radius: 25.0 mm (0.98 in)
 Pin diameter: 4.0 mm (0.16 in)
 Min. inside radius: R1.6 x belt width, R2.2 x belt width
 Curved surface makes perfect circle when Z9 tooth sprocket or 95 mm (3.74 in) flex diameter is applied.

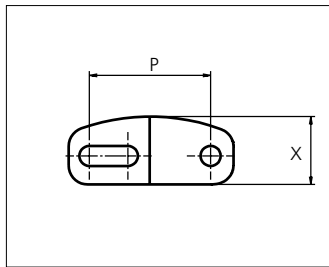
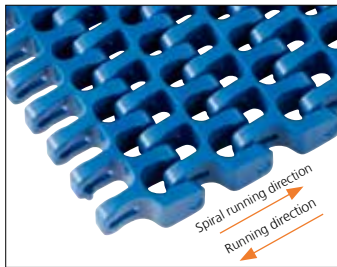
43% Open Radius 1.6



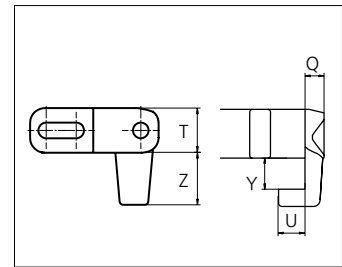
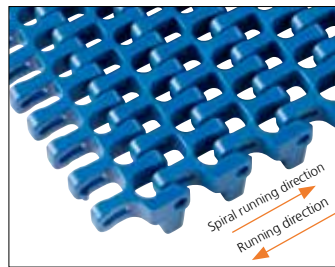
43% Open Radius 2.2



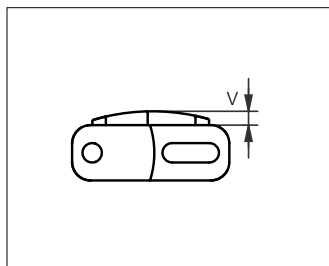
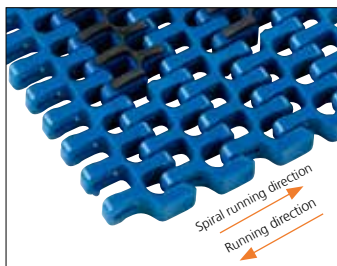
43% Open Tab Radius 2.2



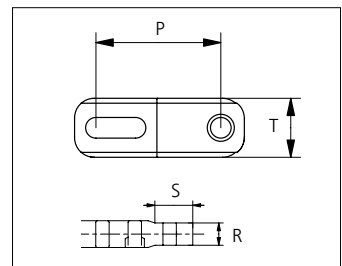
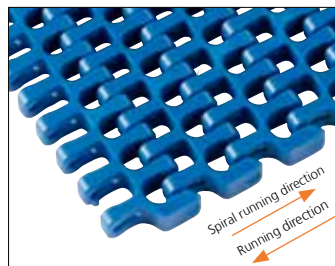
43% Open Curved Surface Radius 2.2



43% Open Curved Surface Tab Radius 2.2



43% Open Rubber Top Radius 2.2




43% Open Edge Radius 2.2

Min. indent for Rubber Top inside and outside in the belt is 44.0 mm (1.73 in).

| | mm | in | | mm | in | | mm | in | | mm | in |
|--------------------|------|------|----------|------|------|----------|------|------|----------|------|------|
| P (Nominal) | 25.4 | 1.00 | S | 16.0 | 0.63 | V | 3.0 | 0.12 | Z | 14.0 | 0.55 |
| Q | 5.5 | 0.22 | T | 12.0 | 0.47 | X | 14.2 | 0.56 | - | - | - |
| R | 10.0 | 0.39 | U | 7.5 | 0.30 | Y | 9.0 | 0.35 | - | - | - |




STANDARD
SIDE FLEXING
PITCH 25.4 MM/1.00 IN

| Type | Belt materials and colors | Standars pin materials and colors |
|--|-------------------------------|--|
| 43% Open Radius 1.6 | POM-D B |  PA6.6 B |
| 43% Open Radius 2.2 | POM-D B W | |
| | PP B W G | |
| 43% Open Tab Radius 2.2 | POM-D B W | |
| | PP B W | |
| 43% Open Curved Surface Radius 2.2 | POM-D B W | |
| 43% Open Tab Curved Surface Radius 2.2 | POM-D B W | |
| 43% Open Rubber Top Radius 2.2 | PP B + 03 K | |
| | PP W + 03 N | |
| 43% Open Edge Radius 2.2 | POM-D B | |
| | PP B | |

Non standard material and color: See uni Material and Color Overview.

Alternative pin and lock materials:

 Snap Pin A2: PP **W** PBT **LG** PA6.6 **B**

| Belt width | | Permissible tensile force (Belt/pin material) | | | | | | | | Belt weight (Belt/pin material) | | | | *Min. No. drive sprocket per shaft | Number of wear strips (Min. No.) | |
|------------|------|--|------|----------------|-----|-------------------|------|----------------|-----|------------------------------------|-------|----------|-------|------------------------------------|----------------------------------|----------------|
| | | POM-D/PA6.6 | | | | PP/PA6.6 | | | | POM-D/PA6.6 | | PP/PA6.6 | | | **Carry (pcs) | **Return (pcs) |
| | | Straight sections | | Curve sections | | Straight sections | | Curve sections | | kg/m | lb/ft | kg/m | lb/ft | | | |
| mm | in | N | lbf | N | lbf | N | lbf | N | lbf | kg/m | lb/ft | kg/m | lb/ft | | | |
| 149 | 5.9 | 2801 | 630 | 1200 | 270 | 1863 | 419 | 720 | 162 | 1.2 | 0.82 | 0.8 | 0.52 | 2 | 2 | 2 |
| 162 | 6.4 | 3046 | 685 | 1200 | 270 | 2025 | 455 | 720 | 162 | 1.3 | 0.89 | 0.8 | 0.57 | 2 | 2 | 2 |
| 226 | 8.9 | 4249 | 955 | 1200 | 270 | 2825 | 635 | 720 | 162 | 1.9 | 1.25 | 1.2 | 0.79 | 2 | 2 | 2 |
| 302 | 11.9 | 5678 | 1276 | 1200 | 270 | 3775 | 849 | 720 | 162 | 2.5 | 1.66 | 1.6 | 1.06 | 3 | 3 | 2 |
| 379 | 14.9 | 7125 | 1602 | 1200 | 270 | 4738 | 1065 | 720 | 162 | 3.1 | 2.09 | 2.0 | 1.32 | 3 | 3 | 2 |
| 455 | 17.9 | 8554 | 1923 | 1200 | 270 | 5688 | 1279 | 720 | 162 | 3.7 | 2.51 | 2.4 | 1.59 | 5 | 4 | 2 |
| 531 | 20.9 | 9983 | 2244 | 1600 | 360 | 6638 | 1492 | 960 | 216 | 4.4 | 2.93 | 2.8 | 1.86 | 5 | 4 | 2 |
| 608 | 23.9 | 11430 | 2570 | 1600 | 360 | 7600 | 1708 | 960 | 216 | 5.0 | 3.35 | 3.2 | 2.12 | 5 | 5 | 3 |
| 531 | 20.9 | 9983 | 2244 | 2040 | 459 | 6638 | 1492 | 1224 | 275 | 4.4 | 2.93 | 2.8 | 1.86 | 5 | 4 | 2 |
| 608 | 23.9 | 11430 | 2570 | 2040 | 459 | 7600 | 1708 | 1224 | 275 | 5.0 | 3.35 | 3.2 | 2.12 | 5 | 5 | 3 |
| 684 | 26.9 | 12859 | 2891 | 2040 | 459 | 8550 | 1922 | 1224 | 275 | 5.6 | 3.77 | 3.6 | 2.39 | 5 | 5 | 3 |
| 761 | 30.0 | 14307 | 3216 | 2040 | 459 | 9513 | 2138 | 1224 | 275 | 6.2 | 4.19 | 4.0 | 2.66 | 7 | 6 | 3 |
| 1449 | 57.0 | 27241 | 6124 | 2040 | 459 | 18113 | 4072 | 1224 | 275 | 11.9 | 7.99 | 7.5 | 5.06 | 11 | 10 | 5 |
| 1984 | 78.1 | 37299 | 8385 | 2040 | 459 | 24800 | 5575 | 1224 | 275 | 16.3 | 10.93 | 10.3 | 6.93 | 15 | 14 | 7 |

Additional standard belt widths are available in steps of 76.4 mm (3.01 in). Additional non-standard belt widths are available in steps of 12.7 mm (0.50 in).

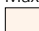
Additional standard belt widths are available in steps of 76.4 mm (3.01 in). Additional non-standard belt widths are available in steps of 12.7 mm (0.50 in).

General belt tolerance is +0/-0.4% at 23°C/73°F. For exact belt width contact Customer Service. Non standard belt width on request.

*Max. Load per Drive Sprocket. Belt material: POM-D 2000 N (450 lbf), PP 1100 N (247 lbf).

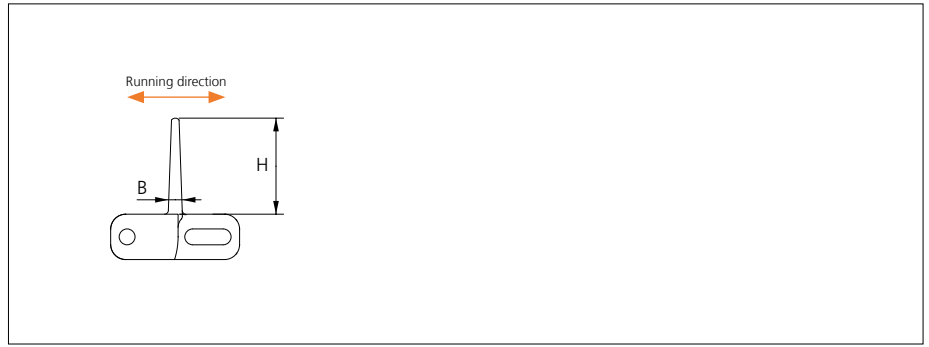
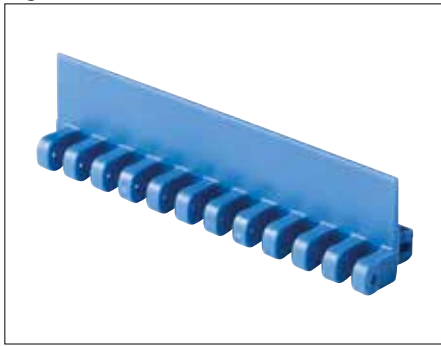
**Max. Spacing between wear strips, Carry: 152 mm (6 in); Return: 304 mm (12 in).

Max. Belt width with Flex ASB R1.6: 1296 mm (51.0 in).

 = Single Link

Accessories

Flight

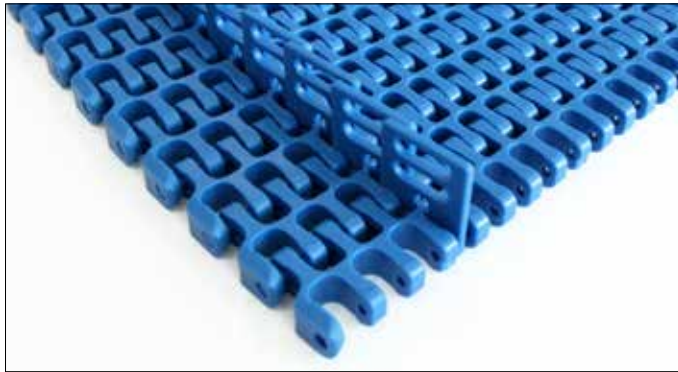


| Type | Flight Material & color | B | | H | | Link size | Width | |
|------|-------------------------|-----|------|------|------|-----------|-------|------|
| | | mm | in | mm | in | | mm | in |
| Flat | POM-D B W | 3.7 | 0.15 | 25.4 | 1.00 | K600 | 151.0 | 5.94 |

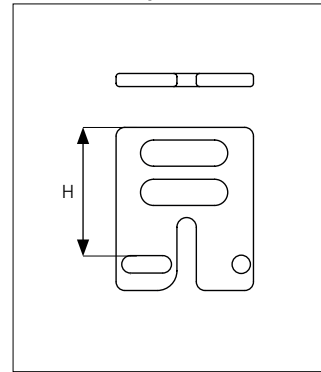
Non Standard material and color: See uni Material and Color Overview.

Accessories

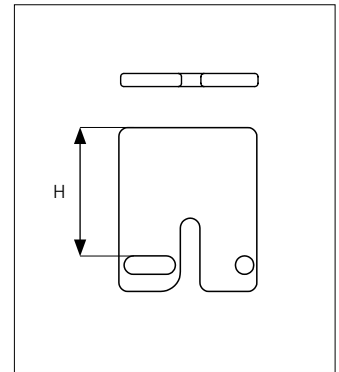
Side Guard



Side Guard Open



Side Guard

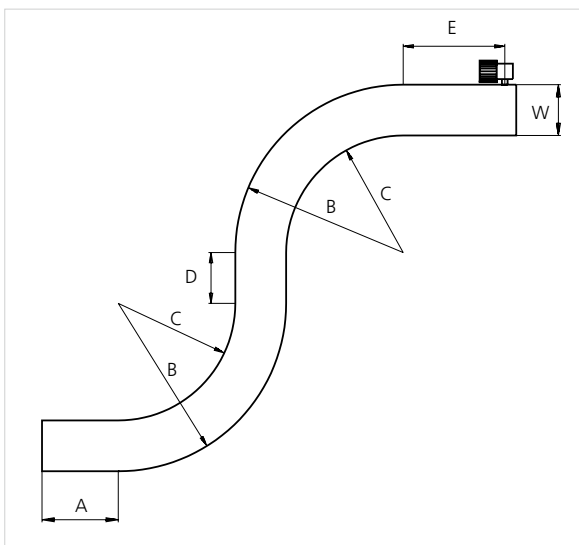


| Type | Side Guard Material & color | H | |
|-------------------------------|-----------------------------|------|------|
| | | mm | in |
| Side Guard Side Guard Open | POM-D B W | 25.4 | 1.00 |

Min. indent for Side Guard is: 44.0 mm (1.73 in) and Increment 12.7 mm (0.50 in).

Non Standard material and color: See uni Material and Color Overview.

Design Guidelines



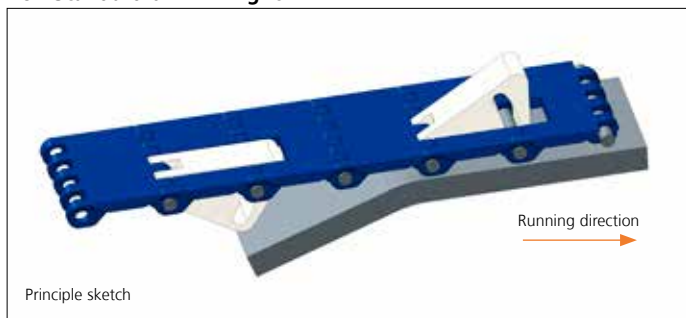
| | 43% Open Radius 2.2 43% Open Tab Radius 2.2 43% Open Curved Surface Radius 2.2 43% Open Curved Surface Tab Radius 2.2 | uni Flex ASB 43% Open Radius 1.6 |
|----------|--|--|
| A | min 1.5 x W | min 1.5 x W |
| B | min 3.2 x W | min 2.6 x W |
| C | min 2.2 x W | min 1.6 x W |
| D | min 2 x W | |
| E | min 2 x W, min | |
| W | Belt width | |

uni Flex ASB 43% Open Radius 1.6 can not be used in conveyors with both left and right turning curves. All curves have to turn in the same direction.

For min. conveyor dimensions please refer to sketch and diagram.

Accessories

Non Standard uni AmFlight



Other Non Standard option: See uni AmFlight Overview.

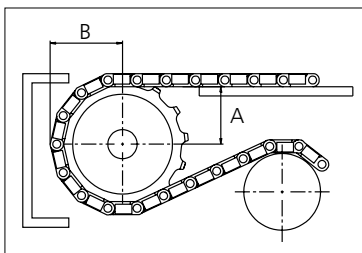
Sprocket

| No. of teeth | Bore size | | | | | | | | | | | | Overall diameter | | Pitch diameter | | Hub diameter | | Dimension A | | Dimension B | | Single row/Two way | Double row/Two way | Molded | Machined |
|--------------|------------|----|------|------|------|------|------|------|------|------|------|------|------------------|------|----------------|------|--------------|------|-------------|------|-------------|------|--------------------|--------------------|--------|----------|
| | Pilot Bore | | | | | | | | | | | | | | | | | | | | | | | | | |
| | in | mm | 19.1 | 20.0 | 25.0 | 25.4 | 30.0 | 31.8 | 38.1 | 40.0 | 60.0 | 63.5 | 90.0 | mm | in | mm | in | mm | in | mm | in | mm | in | PA6 LG | PA6 N | |
| Z07 | x | | ● | ● | ● | ● | | | | | | | 58.0 | 2.28 | 58.5 | 2.30 | 40.8 | 1.61 | 20.4 | 0.80 | 35.2 | 1.39 | x | x | | |
| Z09 | x | | | ● | ● | ● | ● | | | | | | 75.0 | 2.95 | 74.3 | 2.93 | 57.8 | 2.28 | 28.9 | 1.14 | 43.1 | 1.70 | x | x | | |
| Z12 | x | | | ● | ● | ● | ● | ■ | | | | | 100.0 | 3.94 | 98.1 | 3.86 | 82.8 | 3.26 | 41.4 | 1.63 | 55.1 | 2.17 | x | x | | |
| Z15 | x | | | | ● | ● | ● | ■ | ● | ■ | | | 124.6 | 4.91 | 122.2 | 4.81 | 107.4 | 4.23 | 53.8 | 2.12 | 67.1 | 2.64 | x | x | | |
| Z18 | x | | | | | ● | ● | ● | ● | ■ | ■ | | 149.3 | 5.88 | 146.3 | 5.76 | 132.1 | 5.20 | 66.0 | 2.60 | 79.2 | 3.12 | x | x | | |

Machined sprocket



Machined sprocket



Non standard material and color: See uni Material and Color Overview.

Other sprocket sizes are available upon request

Two-part sprocket are available upon request

Other bore sizes are available upon request

uni Retainer Rings: See uni Retainer Ring data sheet

Width of tooth = 7.0 mm (0.28 in)

Width of sprocket = 30.0 mm (1.18 in)

Max. load per sprocket shown does not take bore size into account.

Please also ensure that sufficient size shaft is chosen for corresponding load.

For correct sprocket position: See uni Assembly Instructions for uni Flex ASB.

For more detailed sprocket information, contact Customer Service.

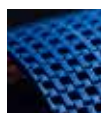
uni Flex ASB/150828



Conveyor Belts



Seamless Belts



Modular Belts



Timing Belts



Transmission Belts



Fabrication & service

Expert advice, quality solutions and local service for all your belting needs
www.ammeraalbeltech.com

Ammeraal Beltech Modular A/S
 Hjulmagervej 21
 DK-7100 Vejle

T +45 7572 3100
 F +45 7572 3348
 admin@unichains.com
 www.unichains.com

This information is subject to alteration due to continuous development. Ammeraal Beltech will not be held liable for the incorrect use of the above stated information. This information replaces previous information. All activities performed and services rendered by Ammeraal Beltech are subject to general terms and conditions of sale and delivery, as applied by its operating companies.