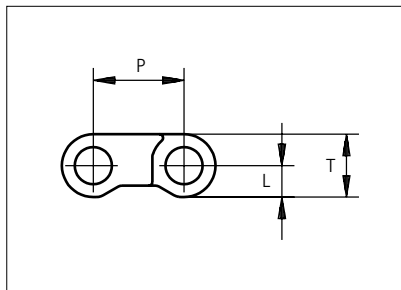
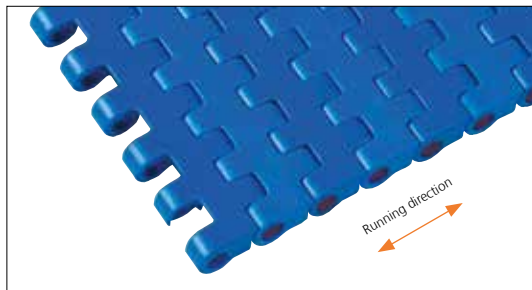




Plastic Modular Belt

Series **uni M-QNB** Type **C**



Straight running belt
 Nominal pitch: 12.7 mm (0.50 in)
 Surface type: Flat
 Surface opening: Closed
 Backflex radius: 20.0 mm (0.80 in)
 Pin diameter: 5 mm (0.20 in)

Belt material & color	POM-SLF B	PP W G	PP B	PE B	POM-EC K	mm		in	
						P (Nominal)	T	mm	in
Pin material & color	PP B	PP W	PP B	PE N	PP B	L	-	-	-

Non standard material and color: See uni Material and Color Overview.

Alternative pin and lock materials: Solid Lockpin: PA6.6 **D** Lockpin: PBT **LG** PA6.6 **N** **D** PP **B** PE **N**

Belt width		Permissible tensile force (Belt/pin material)						Belt weight (Belt/pin material)						*Min. No. drive sprocket per shaft	Number of wear strips (Min. No.)	
		POM-SFL/PP POM-EC/PP		PP/PP		PE/PE		POM-SFL/PP POM-EC/PP		PP/PP		PE/PE			**Carry (pcs)	**Return (pcs)
mm	in	N	lbf	N	lbf	N	lbf	kg/m	lb/ft	kg/m	lb/ft	kg/m	lb/ft			
25	1.0	475	107	325	73	200	45	0.2	0.14	0.2	0.10	0.1	0.10	1	1	1
39	1.5	741	167	507	114	312	70	0.3	0.21	0.2	0.16	0.2	0.15	1	1	1
45	1.8	855	192	585	132	360	81	0.4	0.25	0.3	0.18	0.3	0.18	2	1	1
77	3.0	1463	329	1001	225	616	138	0.6	0.42	0.5	0.32	0.5	0.31	2	2	2
153	6.0	2907	653	1989	447	1224	275	1.3	0.84	0.9	0.63	0.9	0.61	2	2	2
229	9.0	4351	978	2977	669	1832	412	1.9	1.26	1.4	0.94	1.4	0.91	3	2	2
305	12.0	5795	1303	3965	891	2440	549	2.5	1.68	1.9	1.25	1.8	1.21	4	3	2
382	15.0	7258	1632	4966	1116	3056	687	3.1	2.11	2.3	1.57	2.3	1.51	4	3	2
458	18.0	8702	1956	5954	1338	3664	824	3.8	2.52	2.8	1.88	2.7	1.82	5	4	2
534	21.0	10146	2281	6942	1561	4272	960	4.4	2.94	3.3	2.19	3.2	2.12	6	4	2
610	24.0	11590	2605	7930	1783	4880	1097	5.0	3.36	3.7	2.50	3.6	2.42	7	5	3
687	27.0	13053	2934	8931	2008	5496	1236	5.6	3.79	4.2	2.82	4.1	2.72	7	5	3
763	30.0	14497	3259	9919	2230	6104	1372	6.3	4.20	4.7	3.13	4.5	3.03	8	6	3

Additional standard belt widths are available in steps of 76.3 mm (3.00 in.) Additional non-standard belt widths are available in steps of 38.1 mm (1.50 in.)

1983	78.1	37677	8470	25779	5795	15864	3566	16.3	10.93	12.1	8.13	11.7	7.86	20	14	7
------	------	-------	------	-------	------	-------	------	------	-------	------	------	------	------	----	----	---

Additional standard belt widths are available in steps of 76.3 mm (3.00 in.) Additional non-standard belt widths are available in steps of 38.1 mm (1.50 in.)

2974	117.1	56506	12703	38662	8691	23792	5348	24.4	16.39	18.1	12.19	17.5	11.79	30	20	10
------	-------	-------	-------	-------	------	-------	------	------	-------	------	-------	------	-------	----	----	----

General belt tolerance is +0/-0.4% at 23°C/73°F and 50% RH. For exact belt width contact Customer Service. Non standard belt width on request.

The belt width in PE is 0.3 % wider than the belt width in the table.

*Max. Load per Drive Sprocket. Belt material: POM-SLF 1000 N (225 lbf), PP 800 N (180 lbf), PE 800 N (180 lbf), POM-EC 1000 N (225 lbf).

**Max. Spacing between wear strips, Carry: 152 mm (6 in); Return: 304 mm (12 in).

= Single Link



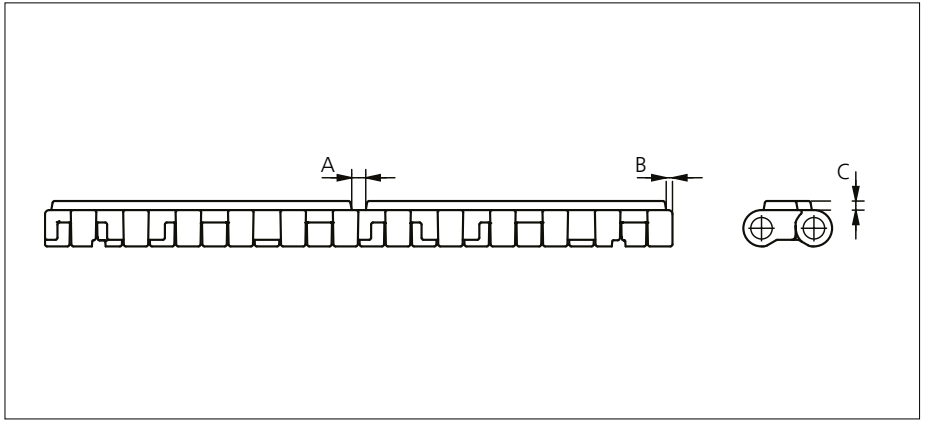
STANDARD

STRAIGHT RUNNING

PITCH 12.7 MM/0.50 IN

Accessories

Rubber Top



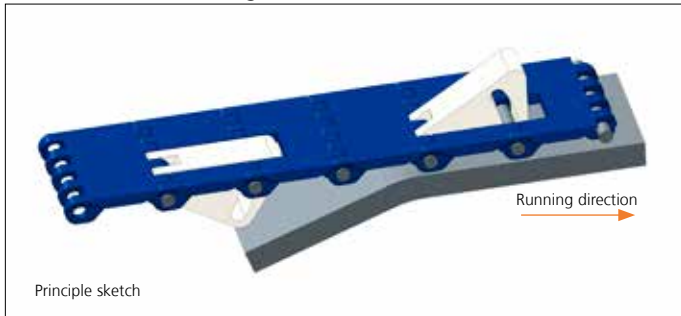
Type	Belt material & color	Rubber material & color	A		B		C		Link size	Width	
			mm	in	mm	in	mm	in		mm	in
Flat	PP W	03 N	3.4	0.13	1.5	0.06	2.2	0.09	K300	75.8	2.98
	PP G	03 K							K600	152.0	5.98

Non Standard material and color: See uni Material and Color Overview.

Rubber Top is not available in belt width below 77 mm (3 in).

Accessories

Non Standard uni AmFlight



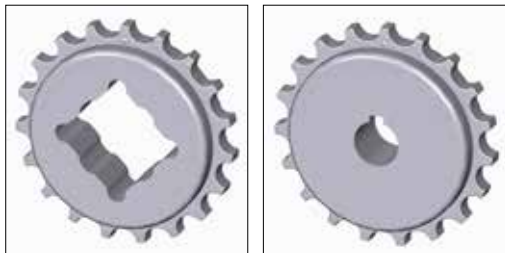
Other Non Standard option: See uni AmFlight Overview.

Sprocket

No. of teeth	Bore size													Overall diameter		Pitch-diameter		Hub-diameter		A-dimension		B-dimension		Single row/Two way	Double row/Two way	Molded PA6 LG	Machined PA6 N
	Pilot bore																										
	mm	in	0.75	0.78	0.98	1.00	1.18	1.25	1.50	1.57	2.36	2.50	3.54	mm	in	mm	in	mm	in	mm	in						
Z10	x			●										41.3	1.63	41.1	1.62	28	1.10	15.2	0.60	25	0.98	x		x	
Z19	x				●	●	●	■	●					78.3	3.06	77.2	3.04	65	2.56	33.7	1.33	43	1.69	x		x	
Z28	x				●	●	●	■	●					114.9	4.52	113.4	4.46	65	2.56	52	2.05	61.1	2.41	x		x	
Z28										■				114.9	4.52	113.4	4.46	100	3.93	52	2.05	61.1	2.41	x		x	
Z38	x						●	●	●					155.5	6.12	153.8	6.06	75	2.95	72.2	2.84	81.3	3.20	x		x	

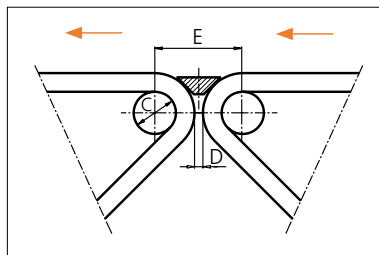
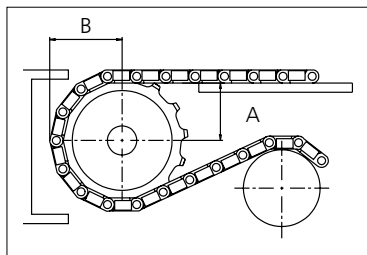
■ Molded sprocket

● Molded sprocket



Non standard material and color: See uni Material and Color Overview.

Nosebars Min. Dimensions



	mm	in
C	20.0	0.79
D	4.0	0.16
E	41.6	1.64

Other sprocket sizes are available upon request.
 Two-part sprocket are available upon request.
 Round bores are always delivered with keyway.
 Other bore sizes are available upon request.
 uni Retainer Rings: See uni Retainer Ring data sheet.
 Width of tooth = 7.0 mm (0.28 in)
 Width of sprocket = 20.0 mm (0.79 in)

Max load per sprocket shown does not take bore size into account.
 Please also ensure that sufficient size shaft is chosen for corresponding load.

For correct sprocket position: See uni Assembly Instructions for uni M-QNB.
 For more detailed sprocket information, contact Customer Service.



Conveyor Belts



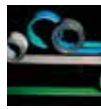
Seamless Belts



Modular Belts



Timing Belts



Transmission Belts



Fabrication & service

Expert advice, quality solutions
and local service
for all your belting needs
www.ammeraalbeltech.com

Ammeraal Beltech Modular A/S
Hjulgagervej 21
DK-7100 Vejle

T +45 7572 3100
F +45 7572 3348
admin@unichains.com
www.unichains.com

This information is subject to alteration due to continuous development. Ammeraal Beltech will not be held liable for the incorrect use of the above stated information. This information replaces previous information. All activities performed and services rendered by Ammeraal Beltech are subject to general terms and conditions of sale and delivery, as applied by its operating companies.