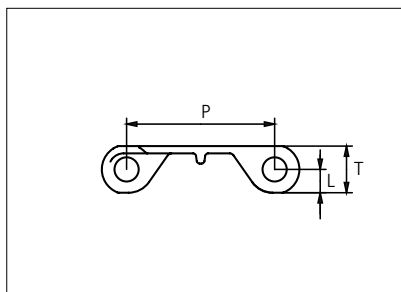
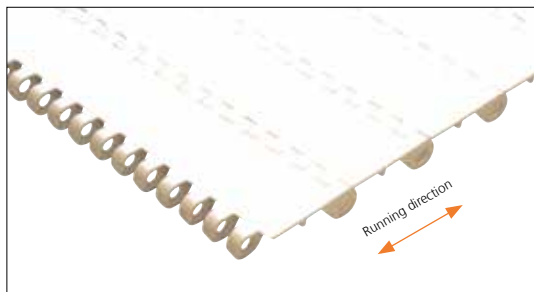




Plastic Modular Belt

Series **uni ULB** Type **C**



Straight running belt
 Nominal pitch: 50.8 mm (2.00 in)
 Surface type: Flat
 Surface opening: Closed
 Backflex radius: 65.0 mm (2.6 in)
 Pin diameter: 8 mm (0.31 in)

Belt material & color	POM-D W B	PP-I W B	mm	in		mm	in	
			P (Nominal)	50.8	2.00	T	16.0	0.63
Pin material & color	PP W		L	8.0	0.31	-	-	-

Non standard material and color: See uni Material and Color Overview.

Belt width		Permissible tensile force (Belt/pin material)						Belt weight (Belt/pin material)						*Min. No. drive sprocket per shaft	Number of wear strips (Min. No.)	
		POM-D/PA66		PP-I/PP		PE/PE		POM-D/PA66		PP-I/PP		PE/PE			**Carry (pcs)	**Return (pcs)
mm	in	N	lbf	N	lbf	N	lbf	Kg/m	lb/ft	Kg/m	lb/ft	Kg/m	lb/ft			
152	6.0	866	195	471	106	456	103	1.1	0.71	0.7	0.47	0.7	0.50	2	2	2
303	11.9	1727	388	939	211	909	204	2.1	1.42	1.4	0.94	1.5	1.00	3	3	2
454	17.9	2588	582	1407	316	1362	306	3.2	2.12	2.1	1.40	2.2	1.50	4	4	2
605	23.8	3449	775	1876	422	1815	408	4.2	2.83	2.8	1.87	3.0	1.99	5	5	3
756	29.8	4309	969	2344	527	2268	510	5.3	3.53	3.5	2.34	3.7	2.49	6	6	3
907	35.7	5170	1162	2812	632	2721	612	6.3	4.24	4.2	2.80	4.4	2.99	7	7	4
1058	41.7	6031	1356	3280	737	3174	714	7.4	4.94	4.9	3.27	5.2	3.48	8	8	4
1209	47.6	6891	1549	3748	843	3627	815	8.4	5.65	5.6	3.74	5.9	3.98	9	9	5
1360	53.5	7752	1743	4216	948	4080	917	9.5	6.35	6.3	4.20	6.7	4.48	10	10	5
1511	59.5	8613	1936	4684	1053	4533	1019	10.5	7.06	7.0	4.67	7.4	4.98	11	11	6
1662	65.4	9473	2130	5152	1158	4986	1121	11.6	7.76	7.6	5.14	8.1	5.47	12	12	6

Additional standard belt widths are available in steps of 151.0 mm (5.94 in).

1956	77.0	11149	2506	6064	1363	5868	1319	13.6	9.14	9.0	6.05	9.6	6.44	14	14	7
------	------	-------	------	------	------	------	------	------	------	-----	------	-----	------	----	----	---

General belt tolerance is +0/-0.4% at 23°C/73°F. For exact belt width contact Customer Service. Non standard belt width on request.

The belt width in PP-I is 0.5 % wider than the belt width in the table.

*Max. Load per Drive Sprocket. Belt material: POM-DI with snub roller 1000 N (225 lbf) without snub roller 625 N (140 lbf).

**Max. Spacing between wear strips, Carry: 152 mm (6 in); Return: 304 mm (12 in).

= Single Link



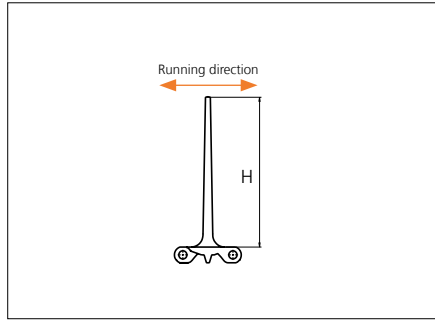
STANDARD

STRAIGHT RUNNING

PITCH 50.8 MM/2.00 IN

Accessories

Flight



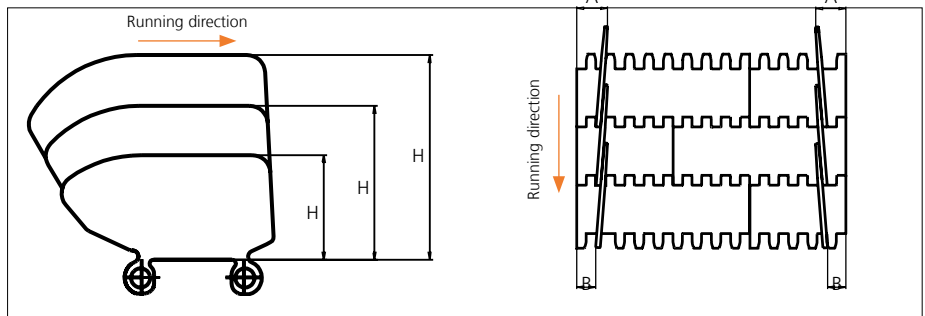
Type	Material & color	H		Link size	Width		Indent both sides					
		mm	in		mm	in	mm	in				
Flat	POM-D <table border="1"><tr><td>W</td><td>B</td></tr></table> PP-I <table border="1"><tr><td>W</td><td>B</td></tr></table>	W	B	W	B	5.0	0.20	K600	151.0	5.94	3.0	0.12
		W	B									
		W	B									
		10.0	0.39									
		25.4	1.00									
			50.8	2.00	0.0	0.0						
			76.2	3.00								
			101.6	4.00								
	101.6	4.00	34.0*	1.34								
	152.4	6.00	0.0	0.00								

*Indent only in one side.

Depending on height and spacing the use of product supports may influence the backflex radius.
Other flights are available: see uni MPB Flights datasheet.

Accessories

Side Guard



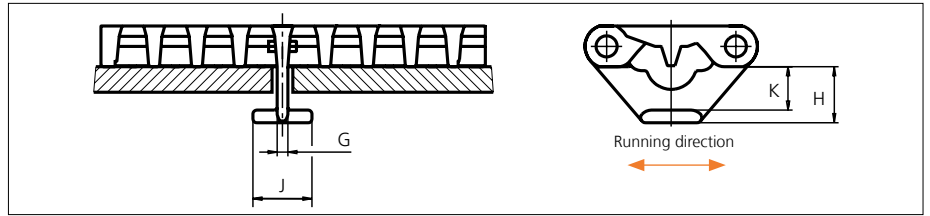
Type	Side Guard Material & color	H		A		B			
		mm	in	mm	in	mm	in		
Closed	PP-I <table border="1"><tr><td>W</td><td>B</td></tr></table>	W	B	50.8	2.00	32.0	1.26	16.0	0.63
		W	B						
		76.2	3.00						
101.6	4.00								

*34.0 mm (1.34 in) combined with flight. Increment: 8.4 mm (0.33 in).

Note: Backflex radius when Side Guards are used: 200.0 mm (7.90 in)

Accessories

Tab



Type	Tab Material & color	G		J		K		H	
		mm	in	mm	in	mm	in	mm	in
Bottom Hold Down	POM-DI w	4.2	0.17	23.2	0.91	17.0	0.67	22.0	0.87

Note: When using tabs, please verify sufficient clearance to the shaft. Max. shaft diameter = Sprocket pitch diameter - 63.5 mm (2.50 in). When using square shafts, please verify that the diagonal does not exceed max. diameter. Example: Sprocket z = 6: Max. shaft diameter 101.6 - 63.5 = \varnothing 38.1 mm (4.00 - 2.50 = \varnothing 1.4 in).

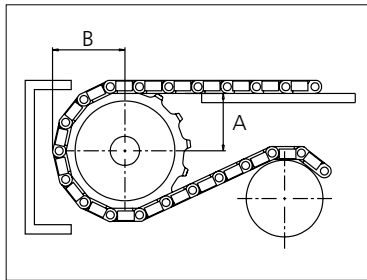
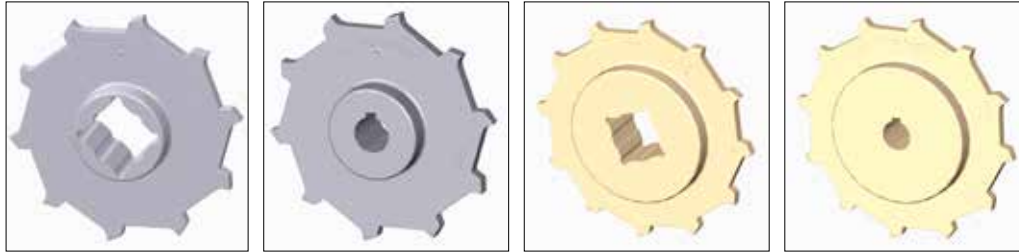
Note: When using a belt system with tabs, the temperature should be constant. Please note that the tabs are not always placed in the middle of the belt.

Non Standard material and color: See uni Material and Color Overview.

Sprocket

No. of teeth	Bore size												Overall diameter		Pitch diameter		Hub diameter		Dimension A		Dimension B		Single row/One way	Molded PA6 LG	Machined PA6 N											
	Pilot bore		in		0.75		0.78		0.98		1.00															1.18		1.25		1.50		1.57		2.36		2.50
	mm	in	19.1	0.75	20.0	0.78	25.0	0.98	25.4	1.00	30.0	1.18	31.8	1.25	38.1	1.50	40.0	1.57	60.0	2.36	63.5	2.50				90.0	3.54	mm	in	mm	in	mm	in	mm	in	
Z08	x							●	●	●	■	■												132.9	5.23	132.8	5.23	65.0	2.56	53.3	2.10	74.9	2.94	x	x	
Z10	x								●	●	■	■												166.3	6.55	164.4	6.47	65.0	2.56	70.2	2.76	90.7	3.57	x	x	
Z10																		■	■					166.3	6.55	164.4	6.47	120.0	4.72	70.2	2.76	90.7	3.57	x	x	
Z12	x								●	●	■	■												198.6	7.82	196.3	7.73	65.0	2.56	86.8	3.42	106.6	4.19	x	x	
Z12																		■	■					198.6	7.82	196.3	7.73	120.0	4.72	86.8	3.42	106.6	4.19	x	x	
Z16	x							●	●	■	■													263.8	10.39	260.4	10.25	150.0	5.90	119.7	4.71	138.7	5.46	x		x

■ Molded sprocket
 ● Molded sprocket
 ■ Machined sprocket
 ● Machined sprocket



Non standard material and color: See uni Material and Color Overview.

Other sprocket sizes are available upon request.
 Two-part sprocket are available upon request.
 Round bores are always delivered with keyway.
 Other bore sizes are available upon request.
 uni Retainer Rings: See uni Retainer Ring data sheet
 Width of sprocket = Single row: 42.3 mm (1.66 in)
 Double row: 50.0 mm (1.96 in)
 Width of tooth = Single row: 9.5 mm (0.37 in)
 Double row: 17.0 mm (0.66 in)

Max. load per sprocket shown does not take bore size into account.
 Please also ensure that sufficient size shaft is chosen for corresponding load.

For correct sprocket position: See uni Assembly Instructions for uni ULB.
 For more detailed sprocket information, contact Customer Service.

uni ULB C/150922



Expert advice, quality solutions
 and local service
 for all your belting needs
www.ammeraalbeltech.com

Ammeraal Beltech Modular A/S
 Hjulmagervej 21
 DK-7100 Vejle

T +45 7572 3100
 F +45 7572 3348
 admin@unichains.com
 www.unichains.com

This information is subject to alteration due to continuous development. Ammeraal Beltech will not be held liable for the incorrect use of the above stated information. This information replaces previous information. All activities performed and services rendered by Ammeraal Beltech are subject to general terms and conditions of sale and delivery, as applied by its operating companies.